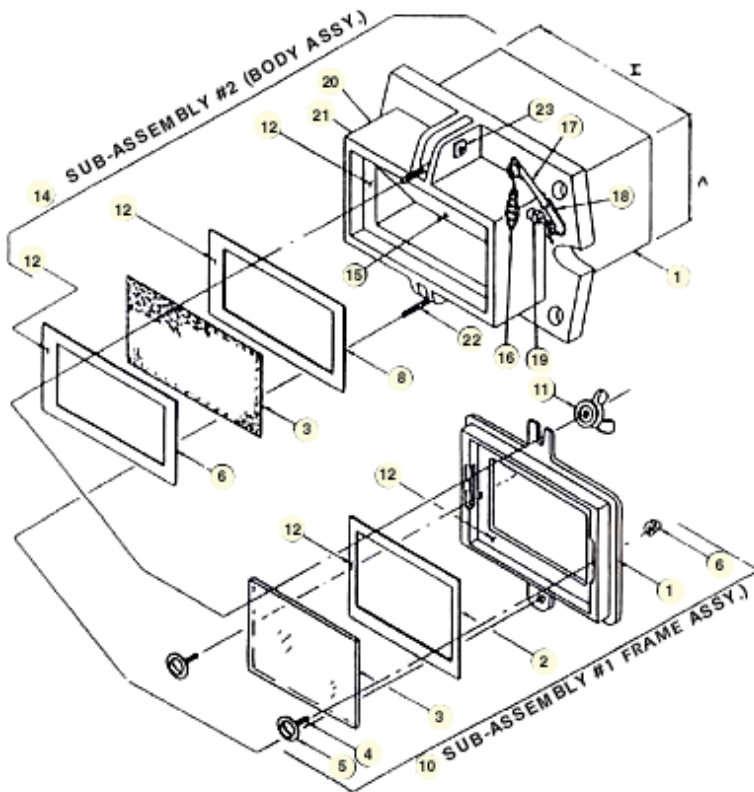


Saf-T-Eye Installation Instructions



PARTS LIST	
1	FRAME
2	* FRAME GASKET
3	* GLASS
4	TRUSS HEAD BOLTS (2 PER UNIT)
5	TRUSS HEAD GASKETS (2 PER UNIT)
6	ACORN NUTS (2 PER UNIT)
7	BODY
8	* BODY GASKET (2 PER UNIT)
9	* S.S. SCREEN
10	SUB-ASSEMBLY #1 (FRAME ASSY.)
11	WING NUTS & METAL WASHERS (2 EA. PER UNIT)
12	* SEALANT
13	* MTG. FLANGE GASKET
14	SUB-ASSEMBLY #2 (BODY ASSY.)
15	SHUTTER
16	WIRE DROP HANDLE
17	HANDLE ROD
18	TORSION SPRING
19	COMPRESSION FITTING W/ PACKING
20	PIPE PLUG W/ NUT
21	PIPE PLUG
22	EYE BOLTS
23	BOLT W/ SQ. NUTS
	* INDICATES RECOMMENDED SPARE PARTS

- Cut hole in furnace wall approx.
- 1/8" larger than the A & I Dimensions.
- Position studs provided by customer.
- Place flange gasket (13) to flange on Saf-T-Eye® (E Dimension).
- Insert into furnace wall opening.
- Securely tighten nuts on studs.
- See catalog dimension sheet for stud location & furnace wall hole dimensions.
- Cleaning or replacing of glass can be done while equipment is in operation.

- To clean the interior of the glass, the frame (10) must be removed from the body (14) of the Saf-T-Eye®.
- When this is done, the Saf-T-Eye® is no longer considered pressure tite.
- **We recommend this procedure (as shown in sub-assembly, #1 & #2 be used once the glass has been cleaned or replaced before the equipment is put back in to operation.**

Components of Assembly

(10) Sub-assembly #1 (Frame Assy)

- Apply 1/8" bead of sealant (12) to interior lip of frame (1).
- Place frame gasket (2) onto sealant (12).
- Repeat with 1/8" bead of sealant (12).
- Position glass (3) into place on sealant (12).
- Position truss head gaskets (5) over holes in the interior of frame (1) & place truss head bolts (4) thru holes.
- Place acorn nuts (6) over truss head bolts (4) on exterior of frame (1) & tighten with extreme care or glass may break.

(14) Sub-assembly #2 (Body-Assy.)

- Apply 1/8" bead of sealant (12) to interior lip of body (7).
- Place gasket (8) onto sealant (12).
- Repeat with sealant(12).
- Place screen (9) onto sealant (12).
- Place gasket (8) onto screen (9).
- Repeat with sealant (12).
- Place assembled frame (10) onto sealant (12).
- Position metal washers & wing nuts (11) in place & tighten.